



Protect. Enhance. Outperform.

ARCHITECTURAL FINISHES

# ACR Smooth Metallic

MONOCHROMATIC ACCENT FINISH SYSTEM



**Durex<sup>®</sup>**

# ACR Smooth Metallic

Durex<sup>®</sup> ACR – SMOOTH METALLIC is ideal for creating distinctive architectural features on exterior/interior wall surfaces and can be applied on new and existing buildings. It provides a very flat, smooth, non-reflective surface incorporating reveals and control joints, affording the designer the flexibility to replicate the appearance of panelized façades.

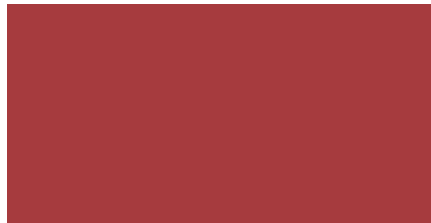


COLOUR:  
**West Coast**

Printed samples represent actual finish colours as closely as possible. Colour appearance may vary by texture, lighting and method of application. Always request a textured sample before ordering.



ISLAND RESORT



RUBY RED



TIDE WATER



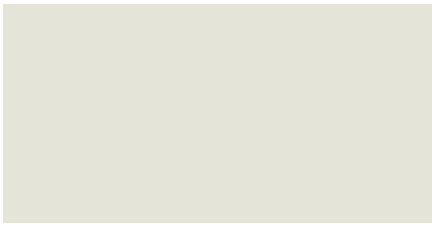
LICORICE



GASPACHO



WEST COAST



ALPINE WHITE



SMOKE



LAMB SKIN



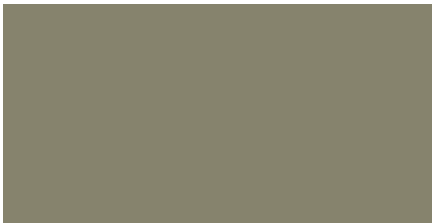
SILVER STREAK



SILVER FOX



SOMERSET TOUPE



ST PETER SAGE



CAMEROON GREY



COUNTRYSIDE



WRIGHT STONE



TUSCANY



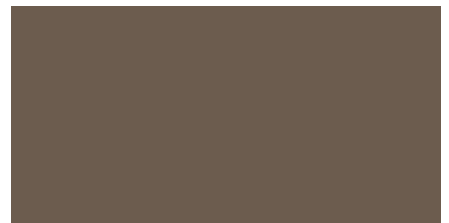
NEVADA SUN



NUTMEG



TETON RANGE



TUDOR BROWN



COOL STEEL



CHARCOAL



BLACK

# Application Guide

Ensure proper application of ACR Smooth Metallic

## ACR SMOOTH COAT APPLICATION

Apply Durex® ACR-Smooth Coat, using a stainless steel trowel in a minimum of 2-coat application with the first coat allowed to harden and cure prior to the application of the 2nd coat.

## SANDING THE SMOOTH COAT

Sand throughout the dry surface of the Durex® ACR-Smooth Coat using a fine sand paper (grit 120 or finer) prior to the application of the successive coat of Durex® ACR- SMOOTH METALLIC.

## ACR PEARL APPLICATION

Apply Durex® PEARL in individual coat application using a brush, roller or spray and allow to dry. A minimum of 2 coats recommended.

**NOTE:** For a higher quality finish additional coats can be applied allowing each coat to dry prior to the application of the successive coat.

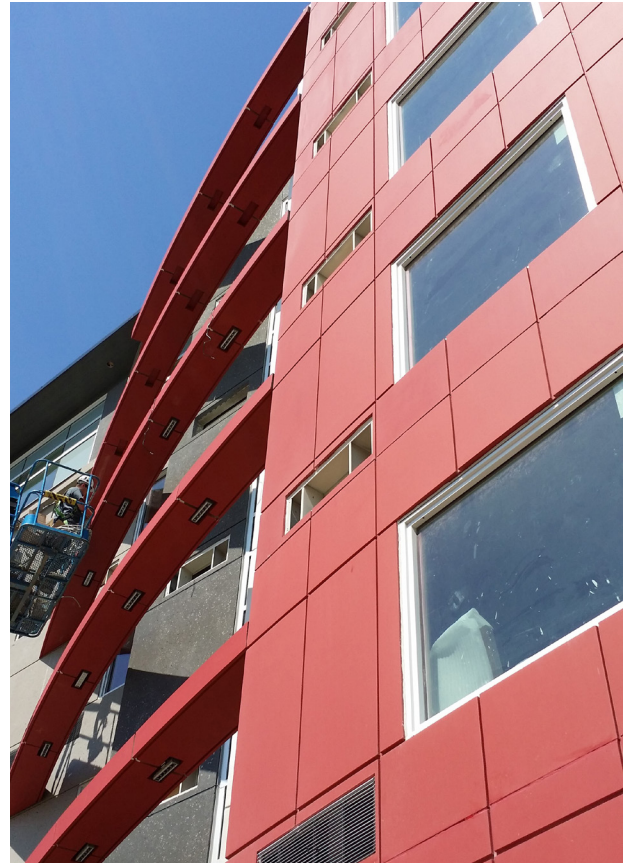
## SAND BETWEEN FINISH COATS

In order to achieve a very smooth final surface, the panels can be sanded with a fine sand paper (grit 120 or finer) prior to the application of the successive coat of Durex® ACR PEARL Final coat shall not be sanded.

## CLEAR COAT

A coat of Durex® ProCoat Clear can be applied using a low pile roller or fine bristle brush throughout finish areas. Take care to apply in a thin light coat, do not over apply or allow to drip. Durex® ProCoat Clear will introduce a low “matte” sheen to the surface. It is recommended that the application of Durex® ProCoat Clear be assessed through a sample area prior to the final application.

**NOTE:** The Durex® ACR SMOOTH METALLIC is a high quality fine accent finish. Best results can only be achieved when the applications are conducted by trained skilled applicators. The enclosed short application procedures are for guideline purposes only and are not intended to be detailed instructions for untrained applicators. Consult with Durabond Representatives for more specific recommendations.



**DURABOND** 

### TORONTO OFFICE

55 Underwriters Road, Toronto, ON M1R 3B4  
T (416) 759-4474 | F (416) 759-4470

### MISSISSAUGA OFFICE

6178 Netherhart Road, Mississauga, ON L5T 1B7  
T (905) 565-9283 | F (905) 565-9365

### WESTERN CANADA OFFICE

14604 124 Ave NW, Edmonton, AB T5L 3B3  
T (780) 451-6364 | F (780) 453-9056

### TOLL FREE

TF 1 877 387-2266 | E [info@durabond.com](mailto:info@durabond.com)

**[durabond.com](http://durabond.com)**